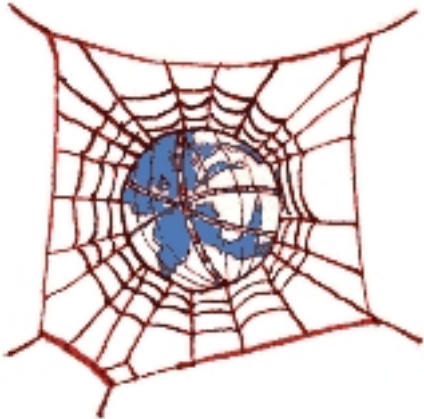


Earthquakes

Written by Garfield Lucas - Last Updated Thursday, 18 August 2011 19:17



This is a new section, dedicated to the strange but scary subject of earthquakes. Seems that earthquakes are a lot more common than one might imagine. These are a couple of PHP-based applets that list recent quakes, together with their relative strengths, distances from the GarfNet server and links to maps of the affected areas. Data is automatically collected on the GarfNet server on an hourly basis from other servers around the planet.

- [Earthquakes near the UK](#) , using data provided by the British Geological Society.
- [Earthquakes worldwide](#) , using data provided by the United States Geological Survey.